

Promat

PROMATECT® , PROMAPAIN® & PROMASPRAY®
Trademark Synonyms for Structural Steel Protection

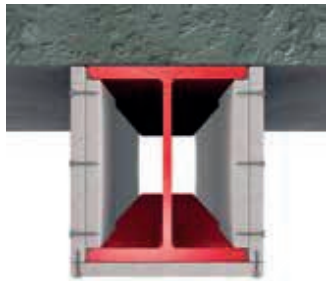
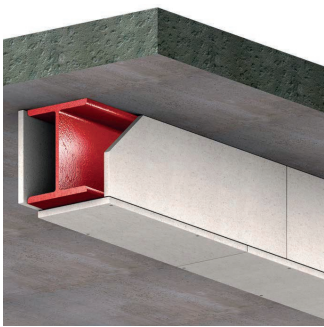
Passive Fire Protection Systems for Structural Members



We Have the Solution One Manufacturer - Full Range of Protection Systems

Promat offers a full range of board, paint and spray products providing flexible solutions to meet a variety of installation and fire protection needs. Our extensive support during planning and construction will help you find the answers, provide safety and save money.

PROMATECT® Fire Protective Cladding Steel in a Box is Well Protected from Fire



PROMATECT®-H

- Calcium silicate board
- Our classic, 50 years of market presence
- Highest level of impact, humidity and frost resistance
- Suitable for external use (type Y, ETAG 018-4)

PROMATECT®-250

- Fire protective board with mineral filler PROMAXON®
- Our economic winner
- Optimized for structural steel protection
- Suitable for internal use

PROMATECT®-L

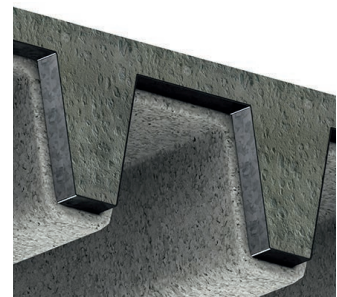
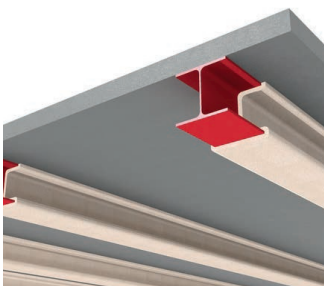
- Lightweight calcium silicate board
- Our lightest solution
- For new buildings and refurbishment projects
- Resistant to the effects of moisture

Advantages

- Simple and effective one layer systems
- Different types of boards suitable for your project
- Proven durability
- 30 - 240 minutes fire resistance

PROMASPRAY® Fire Protective Sprays

Fire Resistant Systems - Coatings, Adhesives, Keycoats, Reinforcements and Fixings



PROMASPRAY®-P300

- Lightweight rendering that provides very efficient fire resistance
- Spray or trowel applied
- Based on vermiculite and gypsum
- Suitable for internal use

PROMASPRAY®-C450

- Monolithic rendering for external use (type Y, ETAG 018-3)
- Spray or trowel applied, single package premix
- Based on vermiculite and portland cement
- Highly durable

PROMASPRAY®-FMII

- Able to withstand the high intensity of hydrocarbon fire
- Structures are protected from explosive spalling
- Does not promote corrosion of steel
- Worldwide tested and approved fire resistance

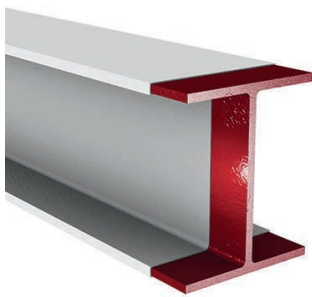
Advantages

- Fire resistance up to 240 minutes
- No toxic or hazardous fumes
- Not hazardous to health
- Textured or trowel finished surface



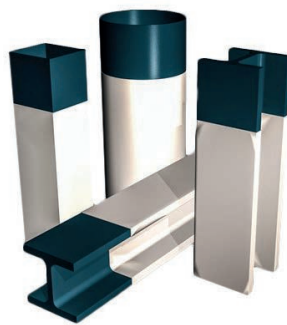
PROMAPAIN[®] Intumescent Paints

Efficient Fire Protection of Steel Beams and Columns



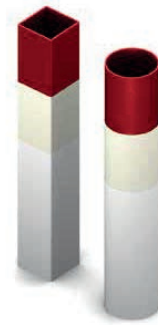
PROMAPAIN[®]-SC3

- Water based intumescent paint
- Fire resistance up to 180 minutes
- Provides an expanded layer of low conductivity char
- Fully exposed use (type X, ETAG 018-2)



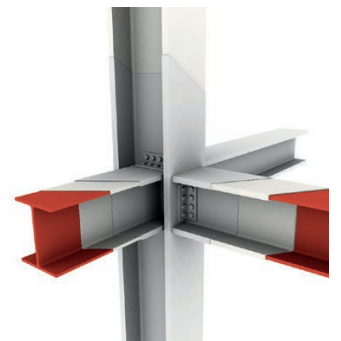
PROMAPAIN[®]-SC4

- Single component intumescent paint in water emulsion
- Fire resistance up to 120 minutes
- Internal or semi-exposed use
- Suitable for galvanized steel



Benefits

- Open section beams/ columns and circular or rectangular hollow sections
- According to EN 13381-8
- Minimum 10 years life span
- Applied with a roller, brush or airless spray

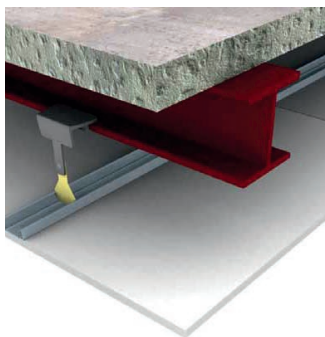


Advantages

- Compatible with major zinc silicate, epoxy and alkyd primers
- No protective finish is required when used indoor
- Can be repainted with acrylic paint
- Not classified as dangerous

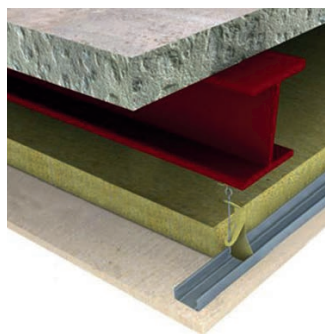
PROMATECT[®] Fire Protective Membranes

Protect Structural Members with Horizontal Membranes



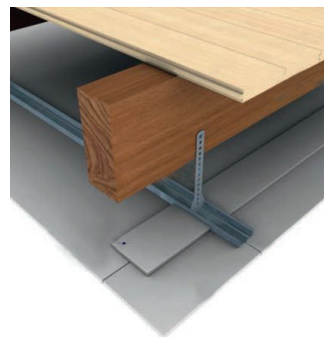
Fire protective board

- PROMATECT[®]-H
- Thin, effective solution
- Stable, impact, humidity and frost resistant
- CE label, ETA according to ETAG 018



Assessment

- According to EN 13381-1
- According to EN 13501-2 + A1
- Suitable for profiles A_p/V 150 - 450 m⁻¹
- Calculated for different critical temperatures



Technical description

- Board thickness 6 mm for R 30, 25 mm for R 90
- Cavity 320 mm (R 30) or 190 mm (R 90)
- Construction slopes between 0° and 25°
- Unlimited dimensions in both directions



Advantages

- Suitable for timber and concrete floors REI 45 - REI 180
- For installation with standard profiles of suspended ceilings
- Simple and fast installation
- Low structure weight